



# EleVisor SERIES



**Futac Systems** is the strategic business unit of Futac Group focusing on the development of latest technologies for building automation and facility management. We offer a wide portfolio of intelligent management solutions for enabling video transmission, control interfacing and environmental monitoring in commercial and industrial applications. Our market position is achieved by continuous innovations and all our product designs are adhered to the stringent requirements of the ISO9001 standard.

We continue to stay at the forefront of technology innovations and assist our forward-thinking clients to deploy value-added lift applications. Our notable suite of EleVisor Series products include: multimedia display system for lift indicators, network intercom system for lift communication, pushbuttons for lift access, and air purifying technology for lift environment. For further information, please visit us at [www.elevisor.net](http://www.elevisor.net).





# EleVisor<sup>800</sup>

## Multimedia Display System

EleVisor 800 (EV-800) is a full featured Multimedia Display System dedicated for lift application. It symbolizes the new generation of multimedia LCD display application in the elevator industry. With the completed control of information dissemination, it enables more dynamic contents to be shown to the passengers, like floor directories, corporate video, events promotions, still advertisements, stock quotes, sports scores, live news feed, time and date etc.

It seamlessly equips with interface to lift controller which allows the floor numbers and directional arrows to be shown simultaneously and overlay on the background screen. Optimum sizes of screen like 10" to 26" can be readily available to cater for your selection. Besides its versatility, it is extremely simple and easy to install. Thanks to the powerful and user friendly content management software which enables the ease of content administration and remote management from a central location.







### Layout Description



#### 1 Background

- can be changed for different event or festivals (background Format: support jpg/bmp file, size 768x1024)

#### 3 Video Window

- direct live input from video source, such as DVD player, TV feed etc
- support Composite Video Signal
- video format: avi, mpg, mp4, wmv/ jpeg
- Live TV Signal

#### 5 Lift Emergency Signal

- show emergency lift status, overload, maintenance and fire alarm

#### 2 Lift Information

- show lift status, floor number and travel directions (floor and arrow picture format: support gif file)

#### 4 Rolling Text

- input greeting, management notice or emergency message, e.g. typhoon signal (support windows default fonts)

#### 6 Time and Date

- show current time and date, can be synchronize through server



Portrait



Landscape



### • Features

- ✓ Slim and flexible
- ✓ Easy to install
- ✓ 16.2M colours
- ✓ Wide viewing angle
- ✓ Able to present advertisement and marketing information  
Instant update of rolling text for urgent events
- ✓ Split screen display mode
- ✓ Interface for external multimedia sources
- ✓ Support any video source (DVD player, live feed TV)
- ✓ Direct broadcast from video source, no time delay
- ✓ Support floor directory (showing the tenant information when lift arrives the related floor)
- ✓ Automatic power on/off the lift car monitor through scheduling the power-save mode
- ✓ Rolling text can be scheduled to display specific message at specified time interval



4:3



16:9

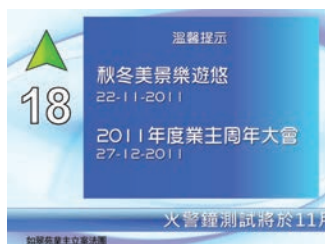
### • Specifications

Model	EV-OP10	EV-OP12	EV-OP15	EV-OP17	EV-OP26
Diagonal Size (TFT)	10.4	12.1	15	17	26
Max. Resolution	800 x 600	1024 x 768	1024 x 768	1280 x 1024	1366 x 768
Brightness (cd/m <sup>2</sup> )	400	500	250	300	350
Color Support	262K	262K	262K	16.7M	16.7M
Contrast Ratio (typ.)	500:1	700:1	700:1	800:1	1000:1
Viewing Angle (H/V)	160°x 140°	160°x 140°	160°x 140°	178°x 178°	178°x 178°
Display Area (mm)	212 x 158	246 x 185	304 x 228	338 x 270	576 x 324
Response Time (ms)	10	10	8	6	9
LCD Panel MTBF (hrs)	50,000				
Display Input Signal	Analog RGB				
Connector	DB-15 connector				
Power Input	Auto-sensing 100 to 240VAC, 50 / 60Hz				
Power Consumption	Max. 40 Watt, Standby 5 Watt x 4				
Compatibility	Multi-platform - Mix PCs, SUNs, IBMs, HPs & DELLs.				
Graphic Input	RCA input				
DC Power	DC power input with 12V				
Operation Temperature	0° to 50°C Degree				
Storage Temperature	-5° to 60°C Degree				
Relative Humidity	5~90%, non-condensing				
Shock	10G acceleration (11ms duration)				
Vibration	5~500Hz 1G RMS random vibration				

\*Specifications may be subject to change.

### ■ **Modernizing the Elevators**

Upgrading your elevator by installing EleVisor - multimedia lift display system that not only provide abundant information to tenants but also beautify and modernize the elevator.

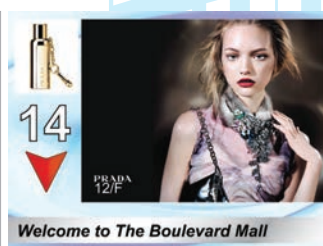


### ■ **Closer Connection with Tenants**

With EleVisor, you can establish closer relationship with tenants by delivering messages on upcoming events, building maintenance, fire alarm test, any fixed or variable important messages etc.

### ■ **Enhancing Building Image**

Differentiating your building image with EleVisor - Tenants and visitors will be impressed by this advanced technology and the value-added service being offered.



### ■ **In-Building Channel Opportunities**

Besides the primary function to show lift related messages, EleVisor enables a flexible in-building channel that can disseminate information and display commercials.

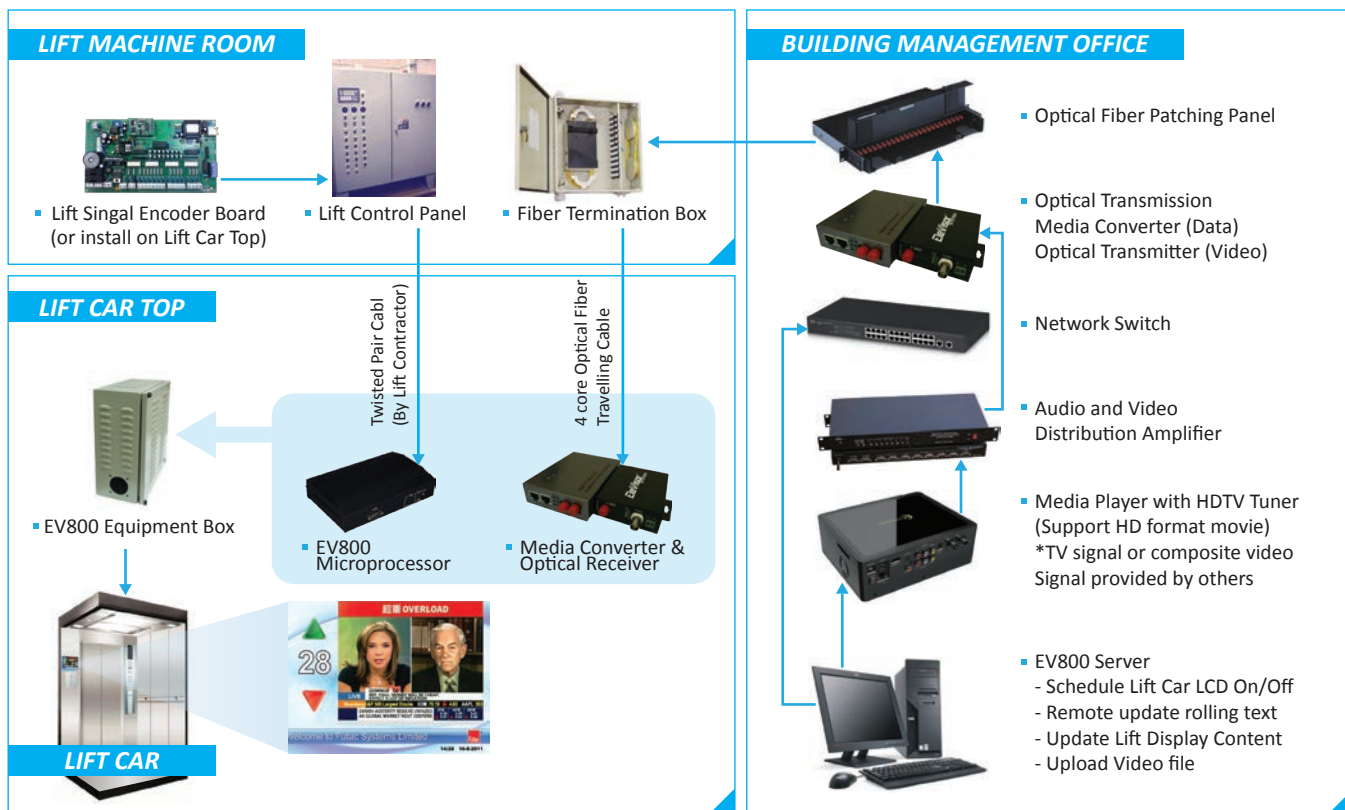
### ■ **Instant Communication Media**

With EleVisor you can present updated information and live feed various contents such as news, weather and notice which are desired by the target audience.

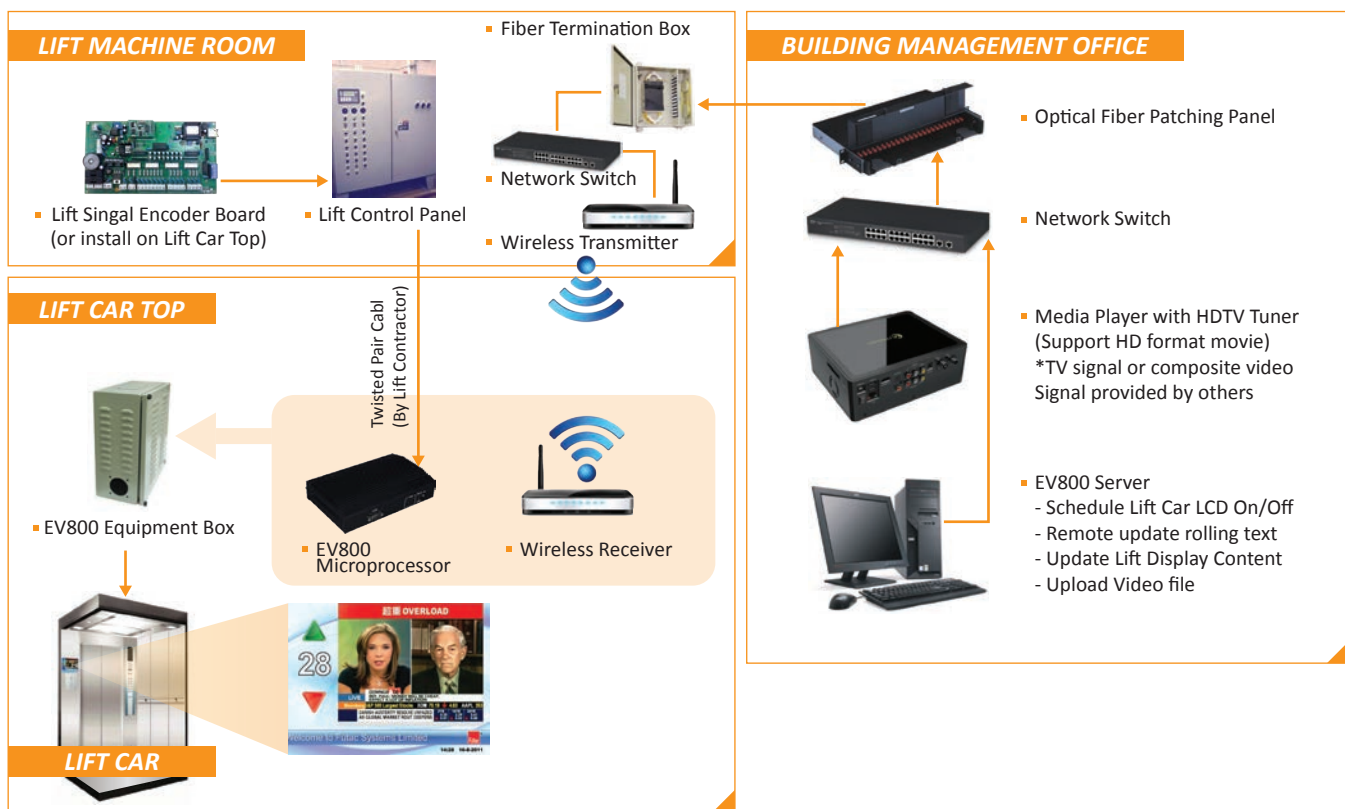




### • Typical Schematic Diagram (Fiber)



### • Typical Schematic Diagram (Wireless)





## Model Comparison



EleVisor 800



EleVisor 500



EleVisor 400

Model	EV-800	EV-500	EV-400
Floor Indication	✓	✓	✓
Travel directions	✓	✓	✓
Time and Date	✓	✓	✓
Lift Emergency Signal	✓	✓	✓
Lift Status	✓	✓	✓
Programmable fonts/ arrows and floor number	✓	✓	✓
Full Colour display	✓	✓	
Video	✓	✓	
Interface for external multimedia sources	✓	✓	
Graphical Messages	✓	✓	
Split Screen Display Mode	✓		
Rolling Text	✓		
Tenants/ Floor Directory	✓		
Background Graphic	✓		
Live broadcasting	✓		





# EleVisor<sup>500</sup>

## Compact Multimedia Player

EleVisor 500 (EV-500) is a compact multimedia display system that supports the essential features for lift application. The cost-effective design of EleVisor 500 provides flexibility and upgradability for installation on different sizes of buildings and elevators. The moderate screen sizes like 8.4" and 10.4" allow ease of installation.

It effectively presents the essential information and messages to your target audience like floor, direction, lift emergency signal, time and date etc. EleVisor 500 also allows more dynamic content to be shown in full screen video format to the lift passengers.



### • Layout Description



### 1 Lift Information

- show lift status, floor indication and lift direction

### 2 Video

- direct input from the video source, such as DVD player, TV feed etc

### 3 Lift Emergency

- show emergency lift status, overload, maintenance, fire alarm, out of service etc

### • Features

- ✓ Slim and flexible
- ✓ Abundant information to be shown such as Floors, Status, Messages
- ✓ 6.5k Color Display
- ✓ Full screen or still picture background selection
- ✓ Can be installed as stand-alone or centralized mode



Messages to your target audience



# EleVisor<sup>400</sup>

## Color LCD Position Indicators

EleVisor 400 (EV-400) is a color LCD type position indicator. It enables the lift status information to be shown on a 256 color LCD display. With the user friendly administration software, the fonts and colors of the floor numbers or messages can be configured easily.

It supports two orientations for enabling the display to be installed in portrait and landscape mode. EleVisor 400 not only provides information to the lift passengers but also enhances the building image at an affordable price.

### • Features

- ✔ Small and Compact
- ✔ Attractive color display, supports graphical messages
- ✔ Programmable fonts, arrows and floor number
- ✔ Display standard lift information like lift position, directional arrow, and standard lift messages
- ✔ Display options of fonts color, size
- ✔ Display options of background color
- ✔ Use as car position indicator on car operation panel
- ✔ Hall position indicator on hall landings
- ✔ Dimming control of LCD panel



Portrait

# EleVisor<sup>450</sup>

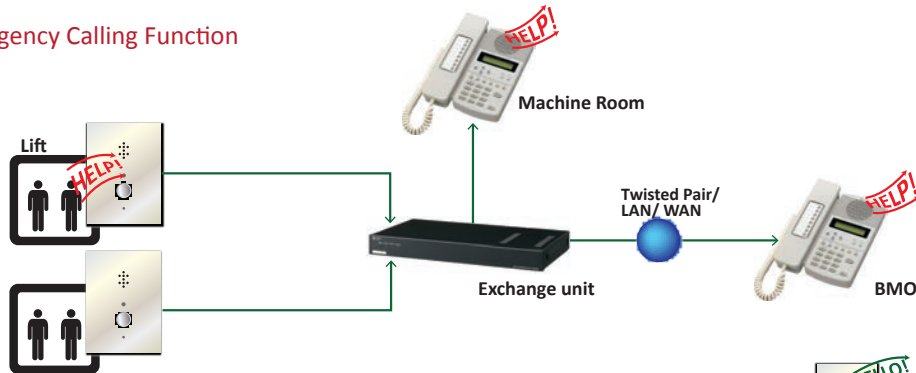
Upgrade to EleVisor 450 (EV-450) for enabling bigger viewing area, higher resolution and rolling text that can support input of greetings and emergency messages such as typhoon signal.



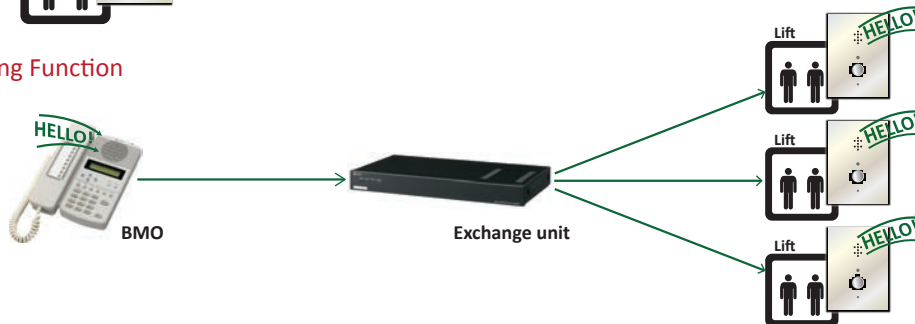
EleVisor 300 (EV-300) is a network intercom system specifically designed for effective communication and monitoring in lift application. It can link up an exchange unit with any combination of dedicated master and door stations over a communication network. The system allows the efficient routing of calls and paging to any number of stations or pre-determined locations.

Employing the sophisticated packed audio technology, the system support high quality of voice communication. For example, its automatic echo cancellation feature provides hands-free duplex conversations between stations without feedback or clipping. The system also comes with a remote monitoring module that can perform self-diagnostic tests on a periodical or scheduled basis.

### • Emergency Calling Function



### • Paging Function



## System Features

- System configuration by LAN with monitoring software
- Master-to-Master and Master-to-Sub station communication
- Choice of three wiring configurations: 2-core shielded cables, 2 wires or 4 wires
- Integration with access control, voice alarm, CCTV and other such systems
- Ambient noise control • Time correction
- Operation and stream logs
- System diagnosis

## Basic Communication Features

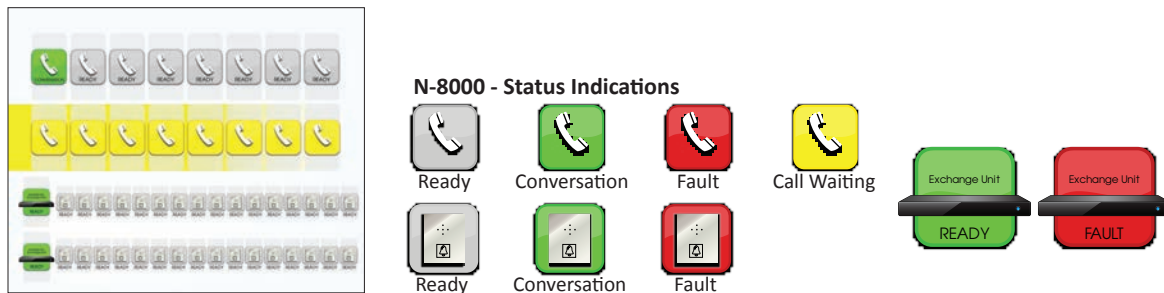
- Handset or hands-free conversation
- Recall • Redial • Camp on busy • Mic-Off
- Remote response • Single-digit dialing
- Call transfer
- Comprehensive call-forwarding features
- Three-party conferencing



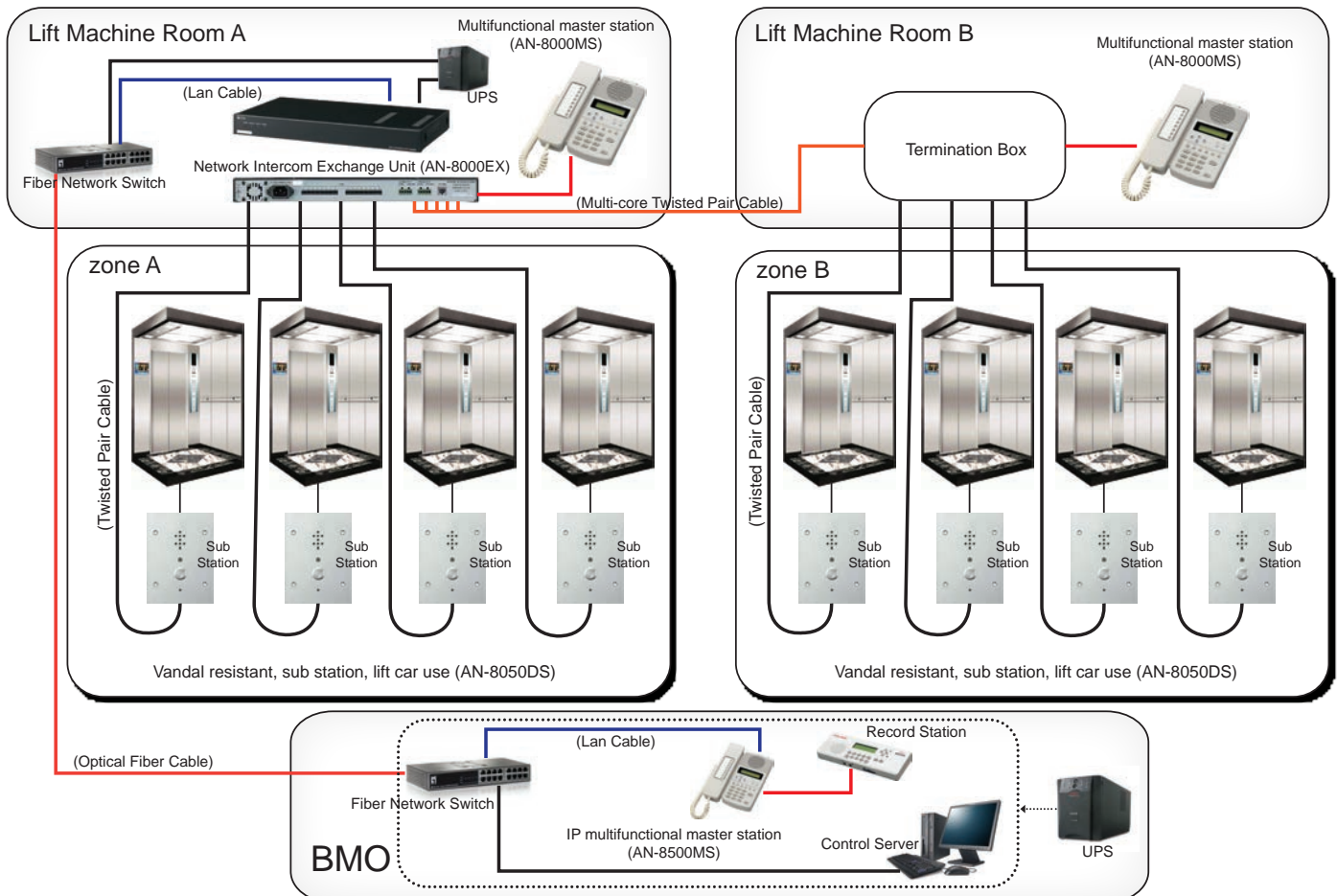
### Remote Monitoring Module

Once the emergency phone fails to report status within schedule, the monitoring console will send out fault alert through telephone, email and/or SMS to assigned personnel for carrying out investigation.

In case the assigned personnel does not respond within a threshold period, the monitoring console can escalate the alert to the next level of personnel for taking actions. Diagnostic results, fault alerts and notification records are kept in a log for audit purpose in future.



### Typical Schematic Diagram





EleVisor 200 (EV-200) are pushbuttons that are designed to meet the diverse needs of access control applications for solid durability and ease of operation. It features the flexible design and visual impact as the ideal choice for applications in lift environment. Moulded in high grade polycarbonate, the button comes in a wide range of options in shape, finish, legend and color, allowing clients to choose the button best suited to location and purpose of use.

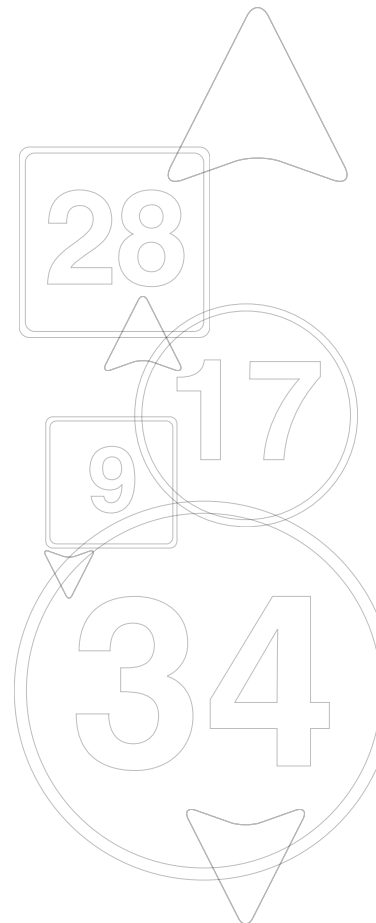
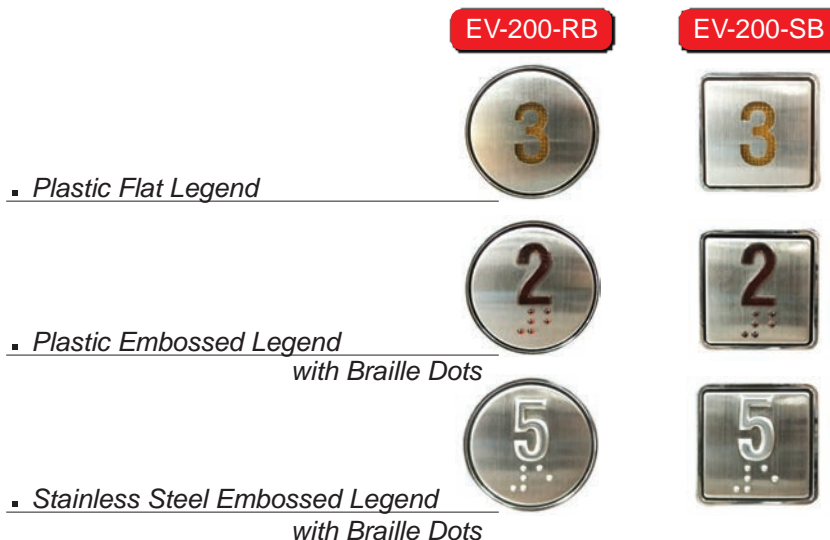
The button can be in round or square shape with the pressel in hairline or mirror stainless steel finish. Floor legend comes with choices of plastic flat, plastic embossed and stainless steel embossed, and standard braille dots can be embossed onto the surface for the visually impaired. The illuminations are based on 5mm LED with a wide variety of colors of choice. Dual color illumination can also be made available. The button has a rugged design and meets the IP64 standard, which guarantees complete protection against dust infusion and damage from splashed water.

### Specifications

- Shape: square ☐ round ☐
- Pressel: hairline or mirror stainless steel plate
- Legend: plastic flat, plastic embossed, stainless steel embossed
- Braille: standard or nil
- Contact: 1 N/O, 2 N/O, N/C+N/O
- Illumination: red, orange, yellow, green, amber, blue, white
- Voltage: DC 12V, DC 24V
- Operation: 1,000,000 cycle
- Weight: 40g
- Protection: IP64
- Compliance: EN81-1/2, EN81-70, EN81-71, EN81-72, EN81-73



\*Specifications may be subject to change.



# SAMSUNG SUPER PLASMA IONIZER

## Air Purifying and Bacteria Eradication

Indoor Air Quality



www.elevisor.net



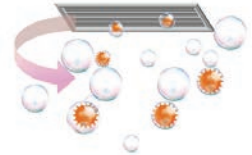
### Aire Doctor Series – Super Plasma Ion (SPi)



SPi keep your passengers safe and healthy by ensuring that clean air is provided when they are inside the elevator. SPi generates Hydrogen atom ( $H^+$ ) and Oxygen ion ( $O_2^-$ ) which reacts together to form Hydroperoxyl radicals which the positively charged biological contaminants then reacts with three hydrogen elements of its protein structure before forming water vapor. Also, the Hydrogen atom ( $H$ ) will combine with OH-radical to form a water vapor and neutralize harmful OH-radical.

SPi has been tested and proven by many academic institutions in Korea, Japan and the United Kingdom (UK) to remove up to 99.99% biological contaminants such as Bacteria, Influenza and SARS Virus, Fungi, molds. As a lift application, SPi eliminates harmful allergens (such as dust mites, dusts, and pets' hair) which may cause rhinitis, asthma or other allergic symptoms. It also removes cigarette and food odor effectively in lift car.

Certified by world renowned research centers:  
**Elimination of H1N1, H5N1, SARS**



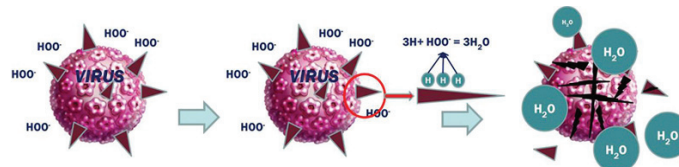
### Advantages

- ★ eliminate airborne virus
- ★ eliminate allergens
- ★ neutralize harmful OH-radicals
- ★ no need to replace filters
- ★ quiet and silent
- ★ can operate continuously
- ★ super energy saver
- ★ certified effectiveness
- ★ emit harmless  $HOO^-$
- ★ effective against smoke or odor



### How does SPi eliminate harmful air contaminants?

The SPi generates active hydrogen( $H$ ) and the oxygen ions( $O_2^-$ ) which forms hydroperoxy radical ( $HOO^-$ ). Then it surrounds the positively charged biological contaminants and reacts with three hydrogen elements of its protein structure, forming water vapor. Also, the active hydrogen combines with OH-radical to form a water vapor, neutralizing harmful OH-radical. The process of eliminating the harmful substances is completely harmless to human body and SPi improves the air quality.



### Awards & Recognition



AHR EXPO and its co-sponsors, ASHRE and AHRI, have selected S-Plasma ion Technology as the Winner in the IAQ (Indoor Air Quality) category of the Innovation Awards. A panel of judges, made up of ASHRAE members selected for their exceptional knowledge of the industry and its products, reviewed and evaluated all submissions. Product entries were judged for innovation, application, value to user, and market impact.

# SAMSUNG SUPER PLASMA IONIZER

## Air Purifying and Bacteria Eradication



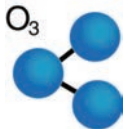
Indoor Air Quality

www.elevisor.net

### How Safe is SPi to Human body?

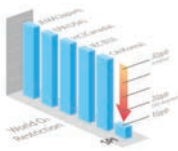
\* Free from harmful positive ion

Positive ions cause discomfort and symptoms such as headaches and nausea and make breathing more difficult. SPI rarely generates harmful positive ions, which make you free from the potentially harmful positive ions



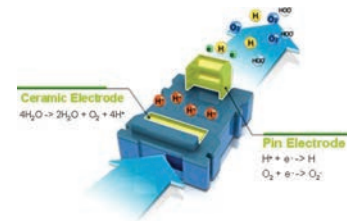
\*Free from ozone

Samsung's ozone regulation is much stricter than that of many organizations around the world. Samsung controls the ozone emission level less than 10ppb. You will be free from the ozone smell.



\*Free from toxic

Seoul Toxicology Laboratory has tested the SPI technology to prove its safety to human body. There were no signs of toxic symptoms observed at the animal test and no side effects of the ionizer, particularly on respiratory organs



### Specifications

Model	SAE-100BH, SAE-100HS
Color	White, Silver
Method	HOO- (Hydroperoxy radicals) 氫過氧自由基
Voltage	220V 60Hz
Applicable Area (ft)	200*
Dimensions (mm)	75mm(w)x39mm(h)x95mm(d)
Deodorizing (ppb)	10 (less than)
Replacement Filter	No Filter
Display	OPERATING KEY / GRAPHIC / NIGHT Light
Power Consumption	High 20W, Med 12W, Low 10W

\*depends on wind velocity

### Certifications

SUBSTANCE	EFFECTIVENESS	CERTIFIED BY
Influenza virus type A 甲型流感病毒	99.7% Elimination 99.6% Elimination	Kitasato Environmental Science Center 日本北里環境科學中心 Yonsei University 南韓延世大學
Avian Influenza (H5N1) 禽流感	99.99% Elimination	Retroscreen 英國 Retroscreen 病毒學公司
Influenza A Virus Subtype (H1N1) 豬流感	99.99% Elimination	Veterinary Medicine at Chungname National University 韓國忠南大學
Corona virus (Strain of SARS-Corona Virus) 冠狀病毒 (沙士-冠狀病毒)	99.6% Elimination	Kitasato Medical Center 日本北里醫學中心
Penicillium 青霉菌	98.4% Elimination	Kitasato Environmental Science Center 日本北里環境科學中心
Asperillus 黑黴	96.4% Elimination	
Cladosporium 枝孢屬真菌	98.9% Elimination	
Staphylococcus aureus 金黃葡萄球菌	99.99% Elimination	
Micrococcus 小球菌	99.86% Elimination	
MRSA (Methicillin-resistant Staphylococcus aureus) 抗藥性金黃葡萄球菌 (耐抗生素院內感染病原)	99.99% Elimination	Korea Consuming Science Research Center 韓國消費科學研究中心
Mold (Staphylococcus aureus / E.coil) 霉菌 (金黃葡萄球菌/大腸桿菌)	99.99% Elimination	
Allergen (Dust Mite, Cat/ Dog Allergen) 過敏原 (塵蟎/貓犬敏感原)	Effectiveness certified Effectiveness certified	Acquired British Allergy Foundation (U.K) Seal 獲得英國BAF認證 RTI3) Test (U.S.A.) 三角研究團學院測試 (美國)
Natural Bacteria 天然細菌	Over 90% Elimination	Shanghai Academy of Preventive Medicine 上海預防醫學科學院
Animal toxicity test 動物毒性測試	Non-toxic	Seoul Toxicology Laboratory 首爾毒性研究所
Active hydrogen atom 活性氫原子	Active hydrogen formation verified	Hiroshima University (日本) 廣島大學
OH-radical 氫氧自由基	Active oxygen neutralized	
Indoor Natural Bacteria 室內空氣中自然菌	93.54% Elimination	Guangzhou Center for Disease Control and Prevention 廣州市疾病預防控制中心
Natural Bacteria in Laboratory 實驗室空氣中的自然菌	99.96% Elimination	Guangzhou Center for Disease Control and Prevention 廣州市疾病預防控制中心